

Maylands Peninsula Golf Course



1st 457 Metres
Par 5 Index 10

Fairly straight par 5 no bunkers on any holes, so keep it in the middle and a flat large green awaits

2nd 316 Metres
Par 4 Index 13

Our second hole may seem a short easier par 4 but this is one of the trickiest with sandy scrub on the right and you need to aim right to open up the green.



3rd 358 Metres
Par 4 Index 6

a dogleg right with sandy edges to the fairway so a good tee shot is essential



- Tees Explained**
- Black = Championship Tour players low handicap
 - Blue = Club Competition handicap used
 - White or Yellow = Guests or Veterans
 - Red = Youth or Ladies

4th 444 Metres
Par 5 Index 18

Although easiest on the course a sharp dogleg right to the green will make you think about your second shot, you will need to place your ball so that you can attack a small green



5th 154 Metres
Par 3 Index 14

Aim for the rear of the green marshy bog lies just in front so you need to carry that



6th 341 Metres
Par 4 Index 8

Close to the Swan River and out of bounds along the left edge means a good tee shot, some trees on the left also can come into play so take care this hole can be much harder than it appears.



7th 349 Metres
Par 4 Index 3

The area on the left is not great for shot making so aim center right. A large green awaits a good drive



8th 142 Metres
Par 3 Index 12

A fairly easy par 3, A tree right of the green makes it harder so aim back of the green



9th 178 Metres
Par 3 Index 4

Water left but a large green so be positive and you will be rewarded although it is a long hole (it used to be a par 4)



Maylands Peninsula Golf Course

Slope 113 Distance Out 5616, In 5040



10th 362 Metres
Par 4 Index 2

A long straight fairway out of bounds left (Driving Range) to a flat green

11th 286 Metres
Par 4 Index 17

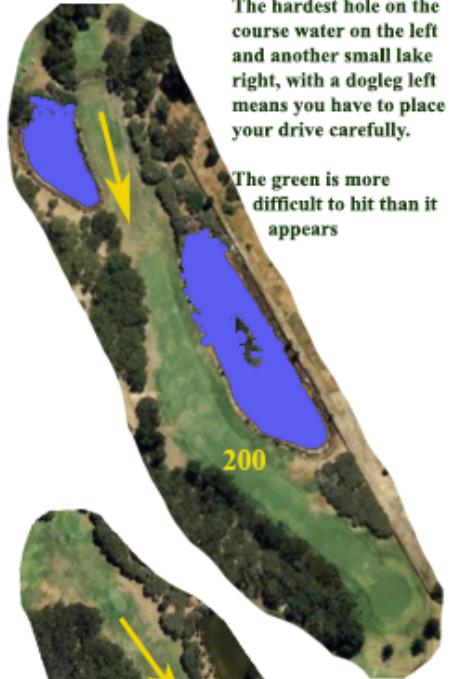
Our second hole has out of bounds on the left but keep to the right side of the fairway to a flat green



12th 359 Metres
Par 4 Index 1

The hardest hole on the course water on the left and another small lake right, with a dogleg left means you have to place your drive carefully.

The green is more difficult to hit than it appears



- Tees Explained**
- Black = Championship Tour players low handicap
 - Blue = Club Competition handicap used
 - White or Yellow = Guests or Veterans
 - Red = Youth or Ladies

13th 155 Metres
Par 3 Index 9

A short par 3 to a large green



14th 427 Metres
Par 5 Index 7

The Swan River on the left with out of bounds markers along that side make this a tough par 5 you need to come in from the left to hit a flat green.



15th 363 Metres
Par 4 Index 5

Slight dogleg or semi-snake fairway you need to attack the green from the left but it is quite sandy on that side.



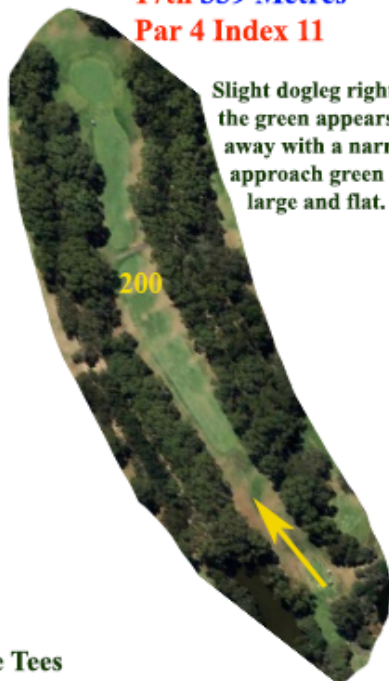
16th 161 Metres
Par 3 Index 15

A tough par 3 with a lake left of a large green protected by trees on the right you usually need a bigger club than you think back of the green is safest.



17th 339 Metres
Par 4 Index 11

Slight dogleg right and the green appears tucked away with a narrow approach green is large and flat.



18th 425 Metres
Par 5 Index 18

Long finishing hole you need to remain in the middle of the fairway so conservative approach will help you par this easy par 5 a large green gives good opportunity for a birdie

